



Working to build a better tomorrow for Ripley County families.

# Community Effort

**Mission:**

Empower collaborative partners to improve the lives of children and families in their community.

**Vision:**

Provide a safe, healthy, satisfying environment in which individuals can become more resourceful, responsible, and self-reliant.

**Values:**

- Collaboration and commitment
- Accountable results
- Resource identification and innovation
- Engaging community support to identify needs
- Sustain fiscal responsibility

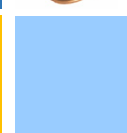
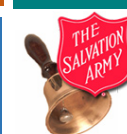
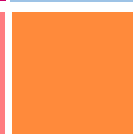
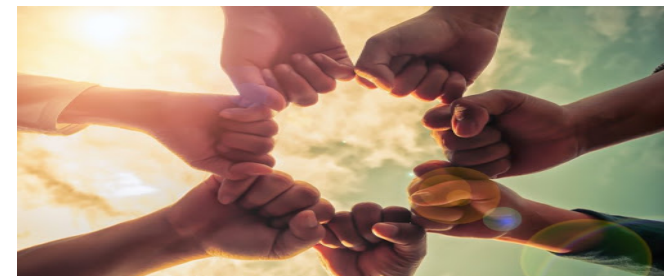
## You are the piece that completes the puzzle.



Ripley County  
**Community Partnership**  
 Community Advocacy Resources & Education

209 West Highway Street, Doniphan, MO 63935  
 Phone: 573-996-7980 Fax: 573-996-4662  
 Email: rcccp@windstream.net  
 Web: www.ripleycountypartnership.com

You are the piece that completes the puzzle.



Working to Build a Better Tomorrow

Ripley County  
**Community Partnership**  
 Community Advocacy Resources & Education

Saving Money. Improving Services. Getting Results. Involving Community. Developing Resources.



The Ripley County Caring Community Partnership is a nonprofit organization that works in a collaborative effort with the community and families to meet the needs of our children. We strive for collaboration, facilitation among groups and individuals to make a positive change in our community, and leveraging funds to help Ripley County achieve its goals to make it a better place to live.



### How to Get Involved:

Volunteering is the perfect way to feel connected to your community. The simple act of offering your skills and enthusiasm will positively impact the lives of others, as well as your own. Several reasons drive people into community service, but the powerful force behind volunteering is the social change that is made through the inspiration of people to make a difference to help those in need. We invite you to explore volunteering opportunities in the community. You can join a coalition, sponsor an event or donate items for families in need.



The Ripley County Community Partnership is a nonprofit organization that works in a collaborative effort with the community and families to meet the needs of our children. We strive for collaboration, facilitation among groups and individuals to make a positive change in our community, and leveraging funds to help Ripley County achieve its goals to make it a better place to live.

#### Policy Directions to Achieve the Core Results:

Improving results for children and families requires a dramatic change in the way services are organized and delivered. Four policy directions shape and guide Missouri's system reform initiative to improving results.

- Being accountable for achieving results
- Bringing services closer to where families live and children attend school
- Active community involvement in decisions that affect their well-being
- Using dollars more flexibly and effectively to meet community needs

#### Children Ready to Enter School

##### Indicators:

- Immunization rates
- Parents read to children
- Children attend early childhood programs
- Receptive vocabulary levels
- Families are connected to support networks & services

##### Programs:

- Read from the Start
- Lending Library Program

#### Children Succeeding in School

##### Indicators:

- Truancy
- Proficiency rates
- Graduation rates

##### Programs:

- Comprehensive wrap around case management
- DYS Mentoring Program
- Youth Mental Health First Aid
- Building Strong Families

#### Children & Families Healthy/Safe

##### Indicators:

- Birth to teens
- Low birth weight babies
- Teen substance abuse
- Child and teen deaths
- Children without health insurance

##### Programs:

- Parenting classes
- ACT – Agency Collaboration Team
- Senior Falls Prev. Coalition
- 2 Degrees Prevention Coalition

#### Youth and Parents Productive/Working

##### Indicators:

- Children that live in poverty
- Head of households without a high school diploma
- Households who lack employment
- Single parent families

##### Programs:

- CWRC (Certified Work Ready Community)
- HiSet
- So MO Works Project
- Workforce Literacy